

Pollinator Count Insect Guide

Here are **5** groups of insects for you to look out for.

Bumblebees and look-alikes



- **large round** bees that are **fuzzy all over**
- black with bands (yellow, white or orange), or they can be all-over gingery-blonde



Fun fact: Some other bees and flies look just like bumblebees. They are copycats! If it looks like a bumblebee, count it here.

Other bees, flies and wasps



- other insects with **see-through** or **shiny wings**
- **stripy yellow** or **orangey-brown**, or **shiny green or blue**, or **black**
- might be slightly hairy, but they **aren't fuzzy** all over

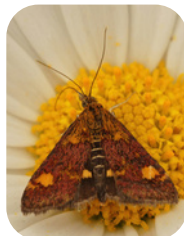


Extra challenge: If you want to work out if it is a fly or a bee, look at the antennae or feelers. Bees and wasps have long thick antennae, usually longer than their head. Fly antennae are usually tiny and hard to see.

Butterflies and moths



- **brightly coloured, patterned, brown** or **white** wings



Fun fact: some moths visit flowers during the day – not all fly at night!

Tiny insects



- anything less than 3mm long (**smaller than a grain of rice**)



Remember: only count insects that are on the flowers.

Other insects



- anything that does not fit into the other four categories



They could be beetles (including ladybirds), bugs or other insects.